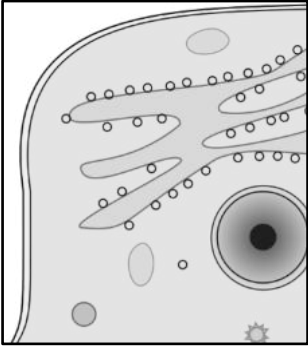
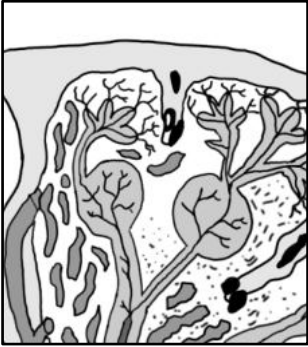


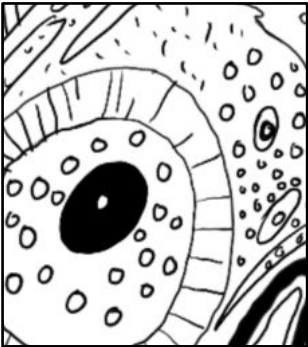
Muster zuordnen Untertest 1

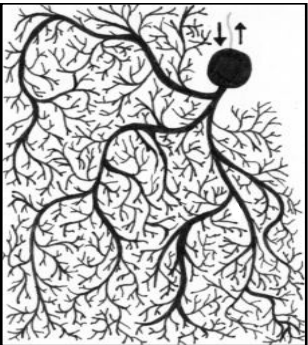
Anzahl der Aufgaben: 20

Zeit: 18 Minuten

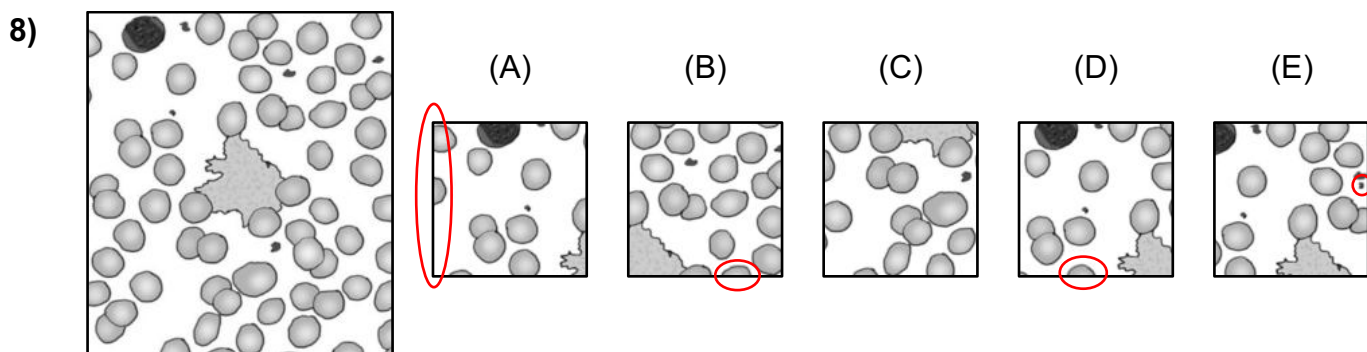
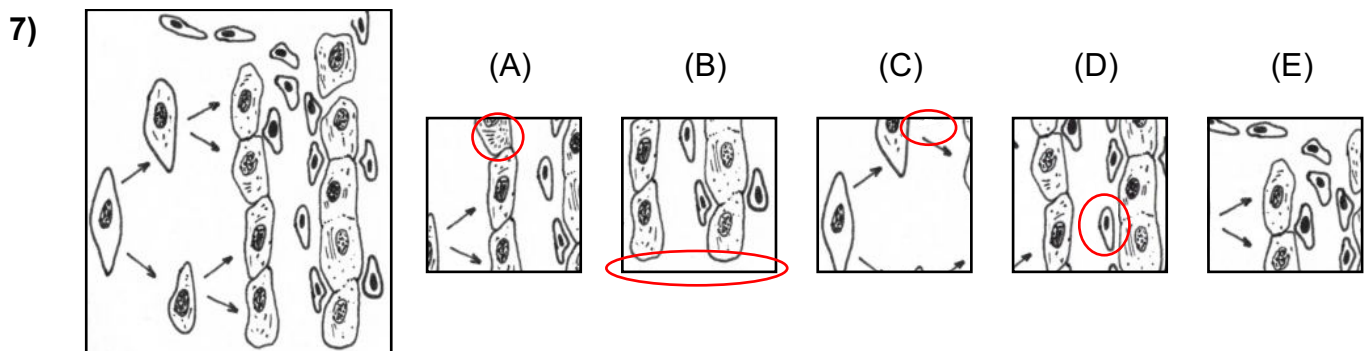
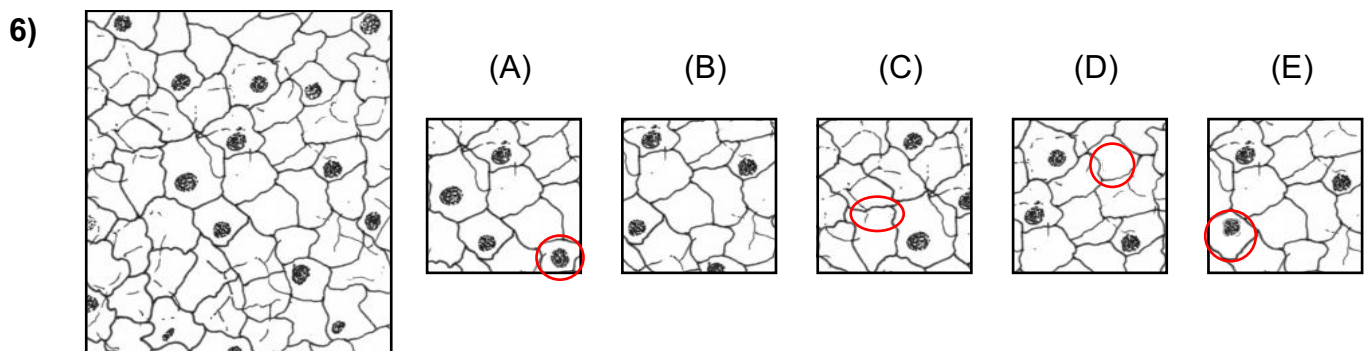
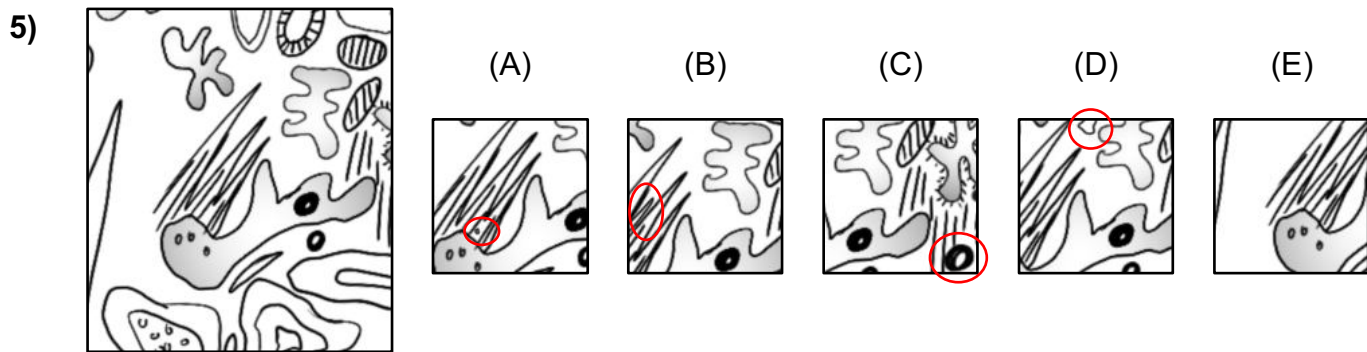
1)  (A) (B) (C) (D) (E)

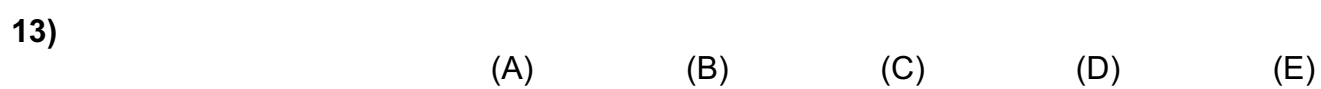
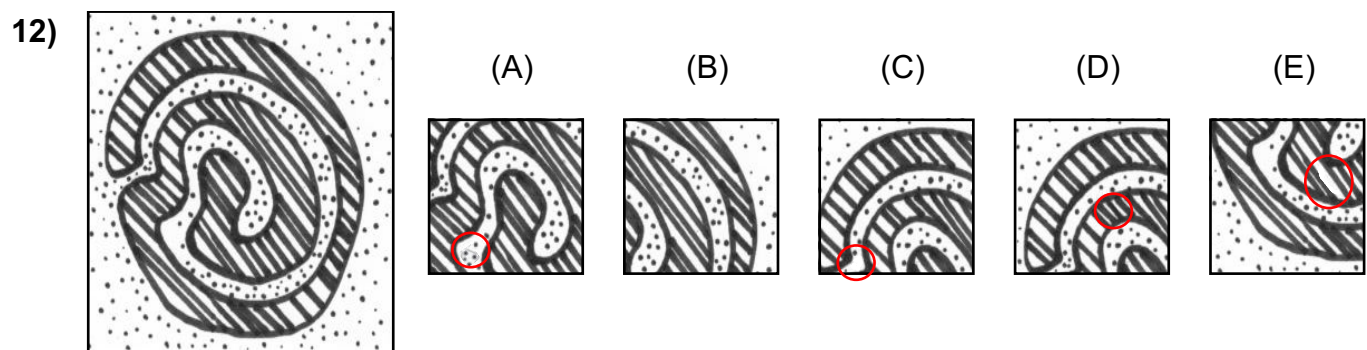
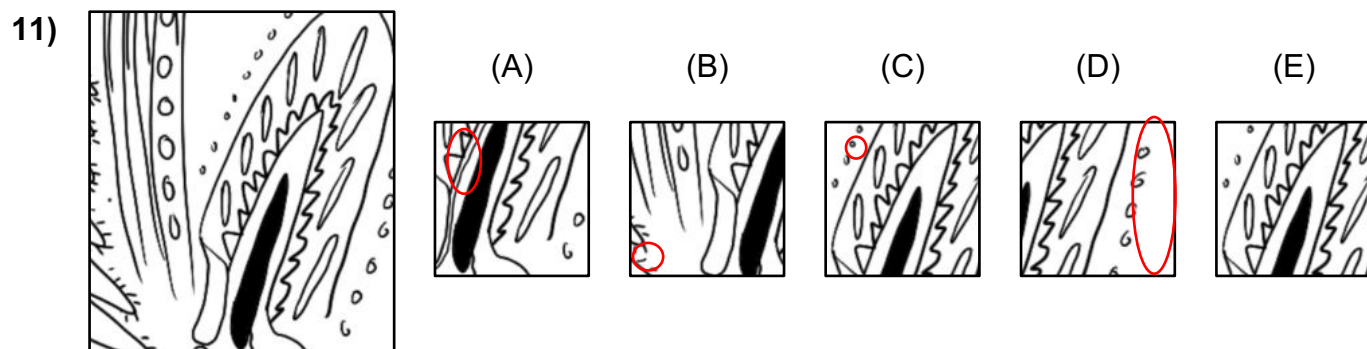
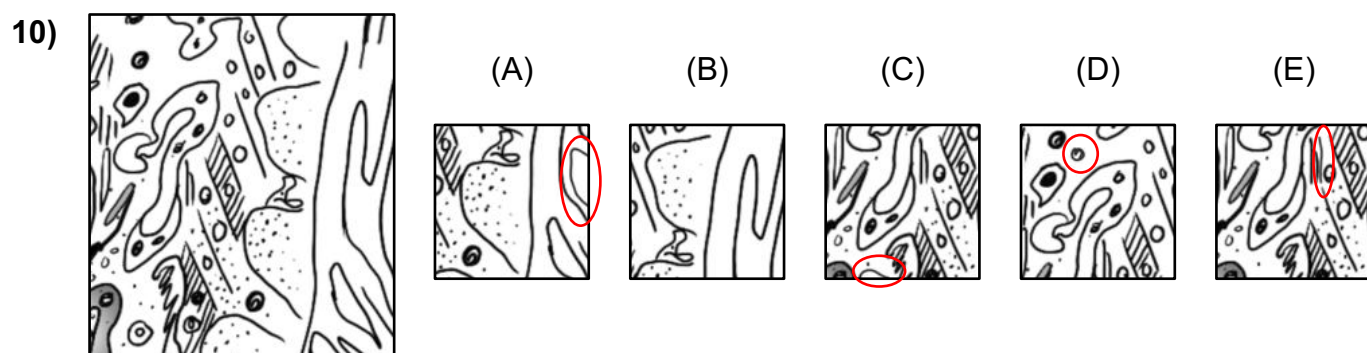
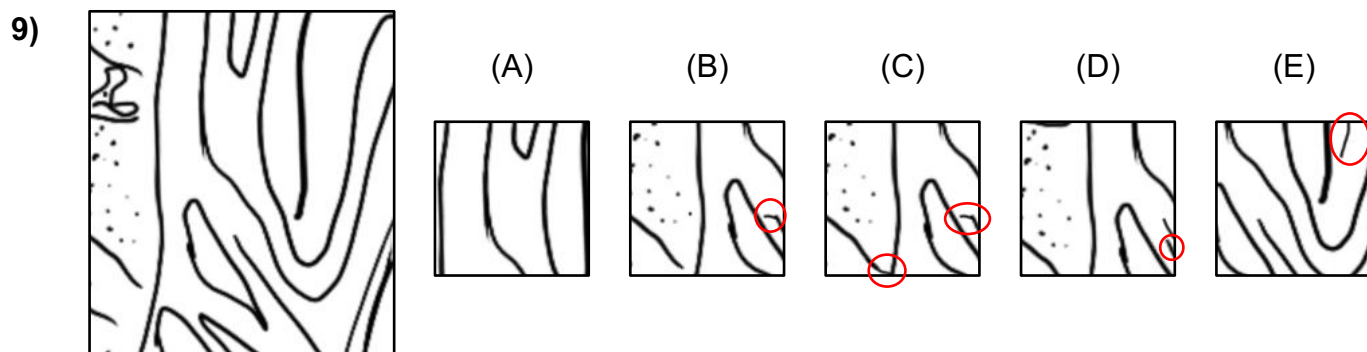
2)  (A) (B) (C) (D) (E)

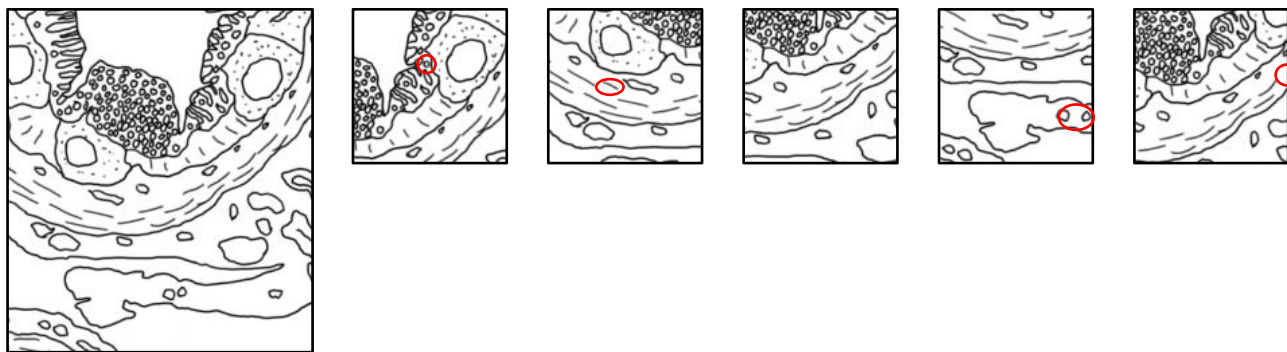
3)  (A) (B) (C) (D) (E)

4)  (A) (B) (C) (D) (E)

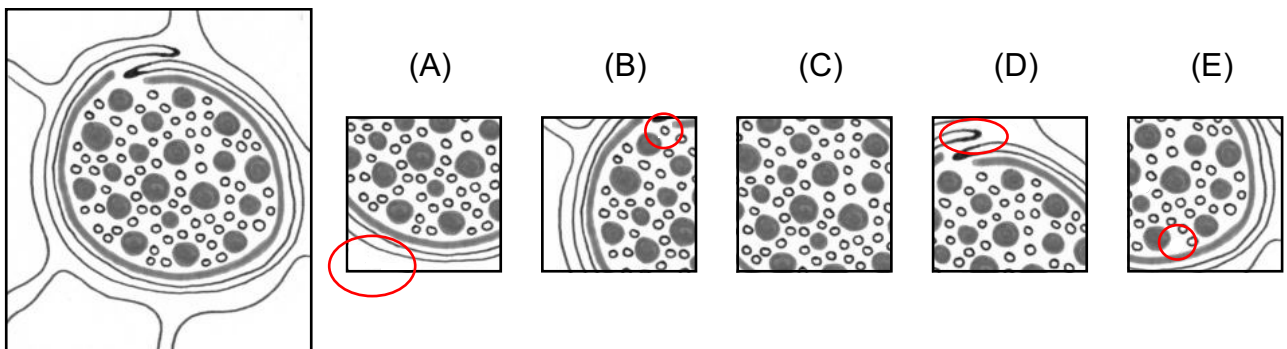
Detailed description of the matching task: The task consists of four main biological diagrams, each followed by five smaller versions labeled (A) through (E). Red circles and ovals highlight specific features in the smaller versions that correspond to features in the main diagrams. In task 1, the main diagram has a star-shaped structure at the bottom right. Option (A) has a red oval around the bottom edge, and options (C), (D), and (E) have red circles around the star-shaped structure. In task 2, the main diagram has a dark spot at the bottom left. Option (A) has a red oval around the bottom left, and options (C), (D), and (E) have red circles around the dark spot. In task 3, the main diagram has a dark spot at the top left. Option (A) has a red circle around the dark spot, option (B) has a red circle around a small dark spot, and option (E) has a red oval around the bottom edge. In task 4, the main diagram has a dark spot at the top right and arrows pointing up and down. Option (A) has a red circle around a small dark spot, option (C) has a red circle around the dark spot, option (D) has a red circle around the arrows, and option (E) has a red circle around a small dark spot.



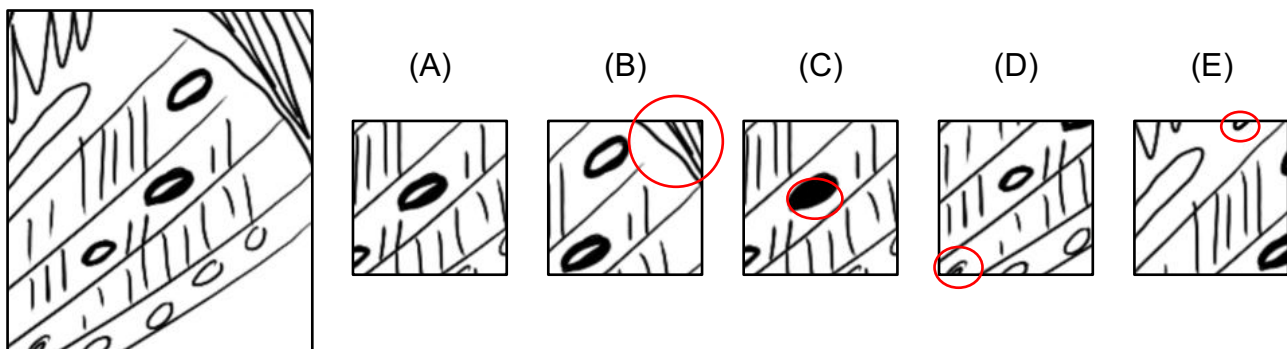




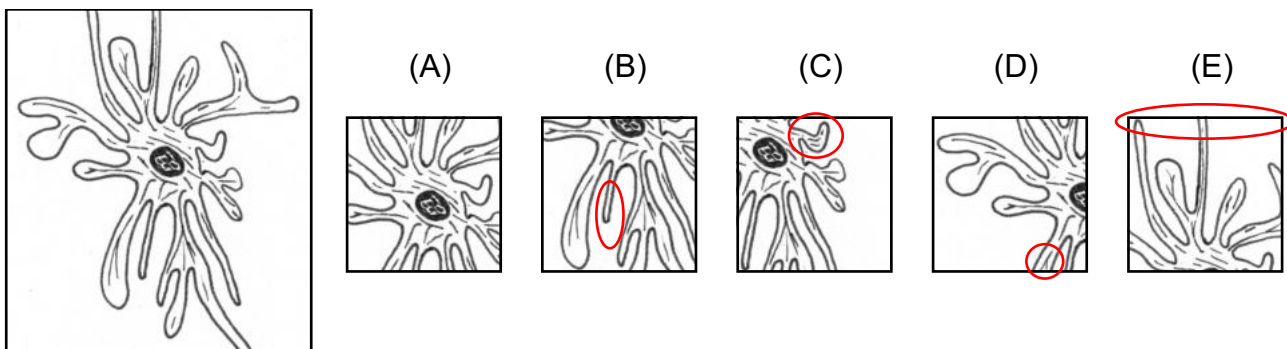
14)



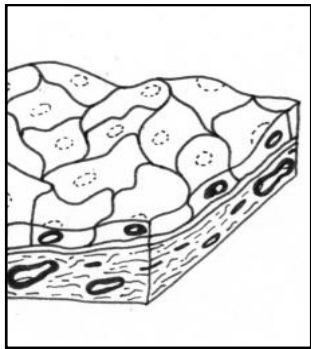
15)



16)



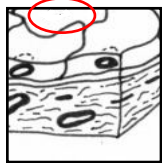
17)



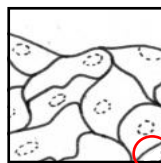
(A)



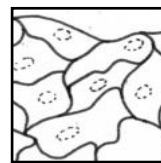
(B)



(C)



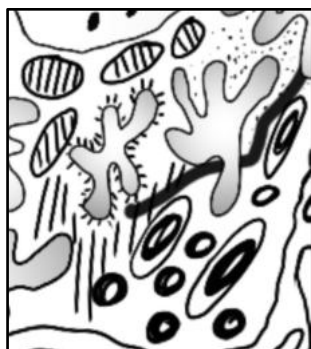
(D)



(E)



18)



(A)



(B)



(C)



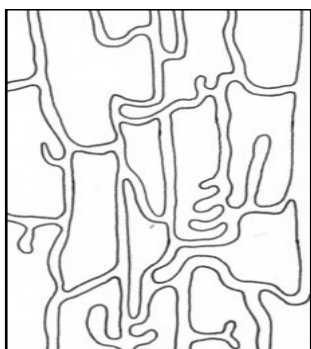
(D)



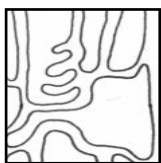
(E)



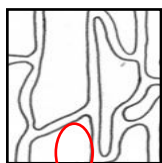
19)



(A)



(B)



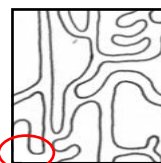
(C)



(D)



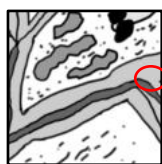
(E)



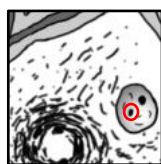
20)



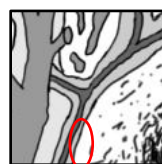
(A)



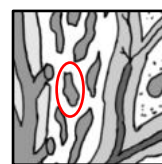
(B)



(C)



(D)



(E)

